

MAKE A GOLDEN MOVE

LIVE LIFE
KING SIZE
AT OUR SPACIOUS HOMES
IN **PREMIUM BLOCK JASPER.**



#StrikeGold

'Jasper' at Brigade El Dorado RERA Registration No :

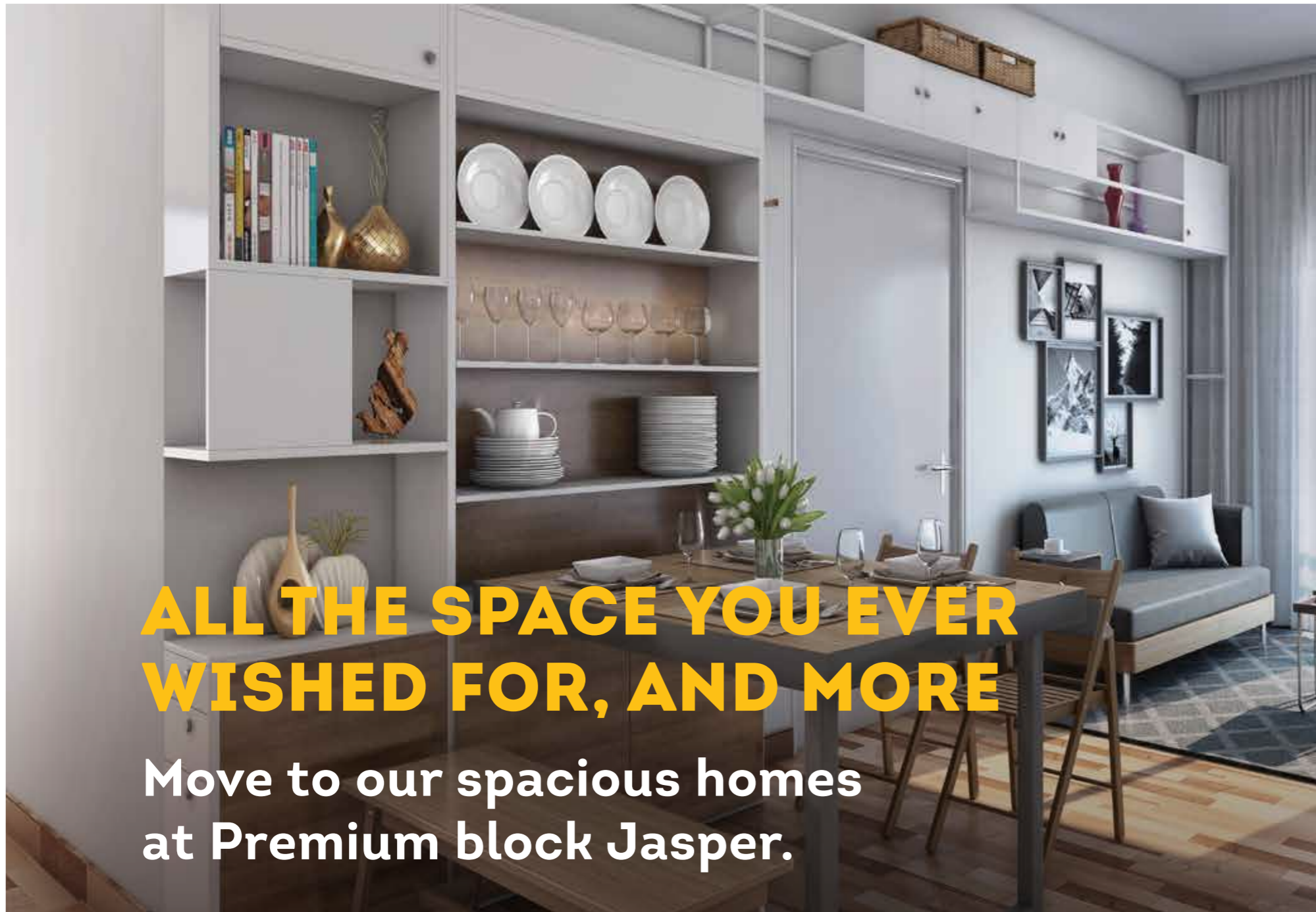
PRM/KA/RERA/XXXX/XXX/PR/XXXXXXXX/XXXXXX

Available at <https://.rera.karnataka.gov.in>

BRIGADE

EL DORADO

— AEROSPACE PARK, BANGALORE NORTH —



ALL THE SPACE YOU EVER WISHED FOR, AND MORE

Move to our spacious homes at Premium block Jasper.



#StrikeGold

'Jasper' at Brigade El Dorado RERA Registration No :

PRM/KA/RERA/XXXX/XXX/PR/XXXXXXXX/XXXXXX

Available at <https://.rera.karnataka.gov.in>



BRIGADE

EL DORADO

AEROSPACE PARK, BANGALORE NORTH



INTRODUCING **BRIGADE EL DORADO**

For centuries, man's desire for riches has inspired numerous bold expeditions. Chasing legends, explorers undertook numerous missions in search of the mysterious El Dorado - the fabled city of gold.

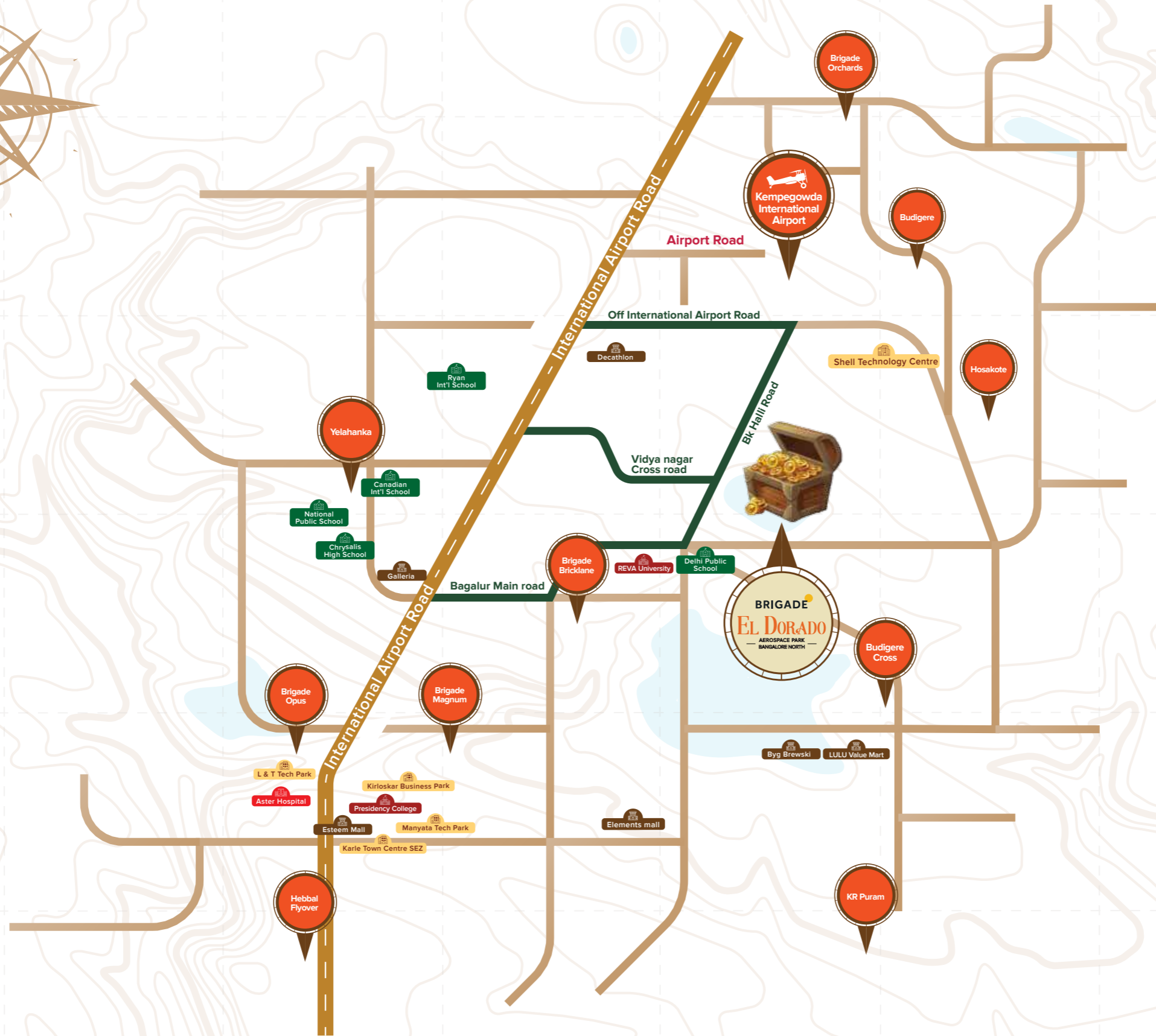
With the launch of Brigade El Dorado, it has become easier than ever to #StrikeGold and revel in a life of good taste and comfort. So why settle for anything less, when you can enjoy the highly rewarding experience of living in one of the finest properties crafted by Brigade.



STRIKE GOLD WITH AN **UNBEATABLE LOCATION**

A Brigade home is always one of the wisest investments you can make. A home in North Bengaluru, just 15 minutes before the International airport, is nothing short of striking gold. Situated within the Aerospace Park, just minutes away from prominent commercial establishments like Shell Technology Centre, proposed Boeing and Rolls Royce offices, IT Parks and many more, the location is known for its clean wide roads, scenic greenery and impeccable infrastructure.

The future is here and you are invited.



Scan to Strike Gold



- | | | | |
|----|-----------------------------|----|---------------------------------------|
| 03 | GUARD ROOM | 29 | COMMUNITY FARMING |
| 04 | FEATURE WALL | 30 | FARM CAFE |
| 05 | REFLECTIVE WATER BODY | 31 | AMPHITHEATER |
| 06 | ARRIVAL COURT | 32 | BASKETBALL COURT |
| 07 | WAITING AREA | 33 | TENNIS COURT |
| 08 | PERIPHERAL WALKWAY | 34 | VOLLEYBALL COURT |
| 09 | PARKING | 35 | SKATING RINK |
| 10 | LAWN WITH SEATING | 36 | SKATE PARK |
| 11 | PATHWAY | 37 | FOOTBALL FIELD |
| 12 | MEDIAN WITH TOWER SIGNAGE | 38 | PLANTED BERM |
| 13 | TODDLERS PLAY AREA | 39 | RAMP/STEPS FROM THE NORTHERN CLUSTERS |
| 14 | SEATING COURT | 40 | BIO SWALE |
| 15 | DROP OFF AREA | 41 | RETENTION POND |
| 16 | WOODLAND WITH HAMMOCKS | 42 | POND SIDE DECK |
| 17 | PET PARK | 43 | STORM WATER STREAM |
| 18 | CLUB SPILL OUT LAWN | 44 | BERM WITH BUTTERFLY GARDEN |
| 19 | MOUND WITH STEPS AND SEATS | 45 | RAMP IN BERM |
| 20 | MULTI-LEVEL POOL | 46 | MULCH PATHWAY |
| 21 | MINI CRICKET FIELD | 47 | STEPS EMBEDDED IN MOUND |
| 22 | SPECTATOR SEATING STAND | 48 | STEPPING STONES |
| 23 | PRACTICE CRICKET PITCHES | 49 | MINI GOLF PUTTING GREEN |
| 24 | KIDS' PLAY LAWN WITH MOUNDS | 50 | LANDSCAPE SPINE WITH AROMATIC PLANTS |
| 25 | PLAY PLATFORMS | 51 | LANDSCAPED TERRACES |
| 26 | SAND PIT | 52 | CLOCK TOWER |

--- PARKS AND OPEN SPACES
 --- CIVIC AMENITIES AREA



The information depicted herein viz., master plans, floor plans, furniture layout, fittings, illustrations, specifications, designs, dimensions, rendered views, colours, amenities and facilities etc., are subject to change without notifications as may be required by the relevant authorities or the developer's architect, and cannot form part of an offer or contract. Whilst every care is taken in providing this information, the Developer cannot be held liable for variations. All illustrations and pictures are artist's impression only. The information are subject to variations, additions, deletions, substitutions and modifications as may be recommended by the company's architect and/or the relevant approving authorities. The Developer is wholly exempt from any liability on account of any claim in this regard. (1 square metre = 10.764 square feet). E & OE.



PROJECT **VIEWS**



Designed by one of Spain's most celebrated architects, Brigade El Dorado is a sprawling 50-acre residential enclave, exquisitely crafted to exceed the demanding lifestyle aspirations of Indian millennials, while employing futuristic technologies achieve maximum energy efficiency and minimize wastage of precious resources like water. *The world outside is a mesmerizing cornucopia of myriad amenities, nestled amidst landscaped greens, as far as your eyes can see, making Brigade El Dorado a truly golden living experience.*





Artist's impression



STRIKE GOLD WITH AN **EXQUISITE LIFESTYLE**

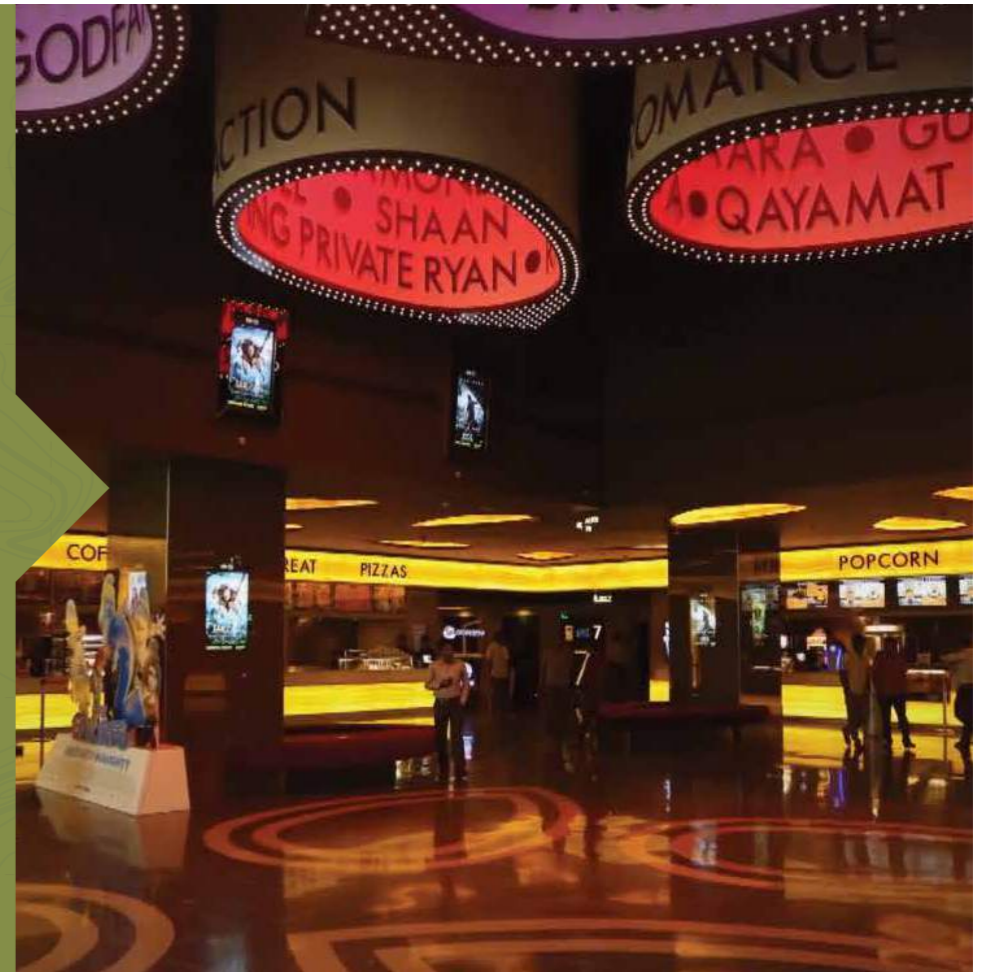


Gold reigns as the supreme symbol of wealth and opulence and opens doors to a luxurious lifestyle that we all aspire for. With Brigade El Dorado, the bar has been further raised, and you are invited to an experience that can well be described as the Gold standard of Community Living!



4-SCREEN MULTIPLEX

You will never really have to step out for an evening of fun and entertainment with a state-of-the-art, 4-screen multiplex within the complex itself.



TENNIS COURT

Our immaculately maintained green-topped tennis courts will inspire you to ace every game you play.



MINI-GOLF GREEN

Our beautiful mini-golf putting green is the perfect spot to spend a leisurely weekend perfecting your swing.

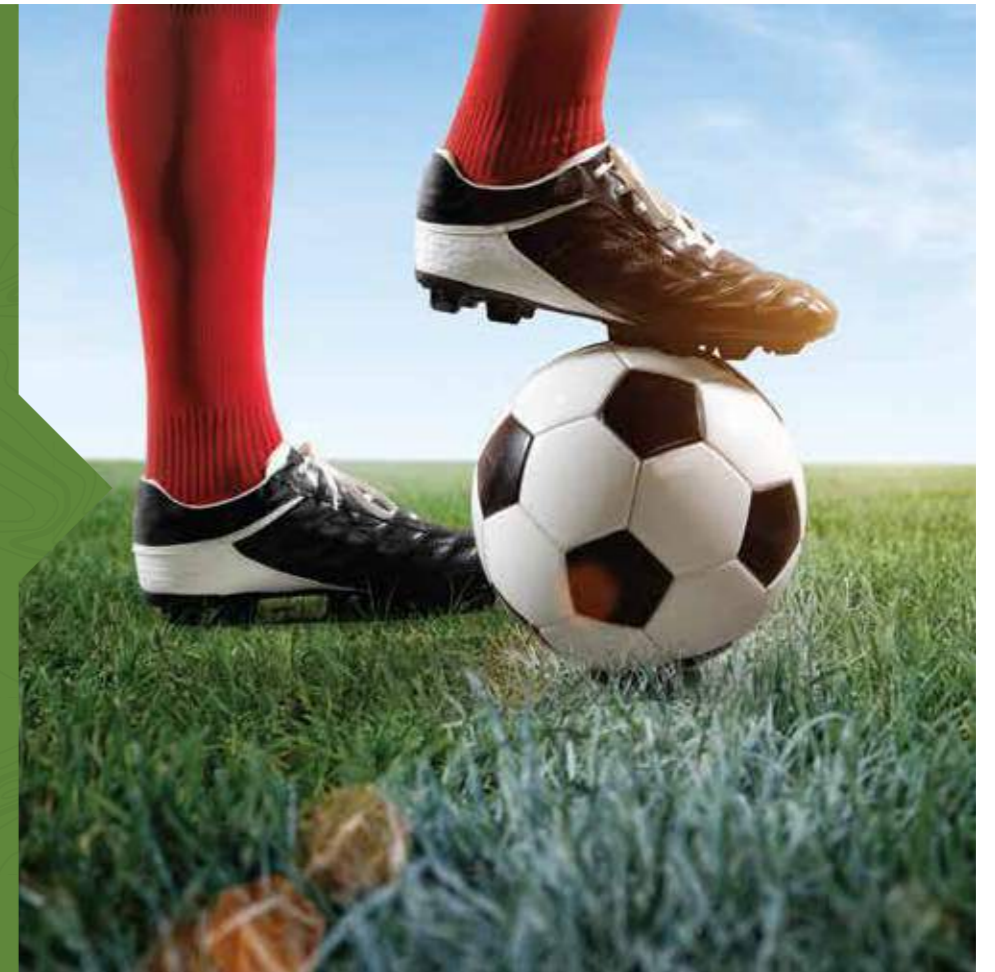


BASKETBALL

If shooting hoops, is what gets you excited, you will love our full-sized basketball court, where you will have all the space you need to score those tricky 3-pointers.

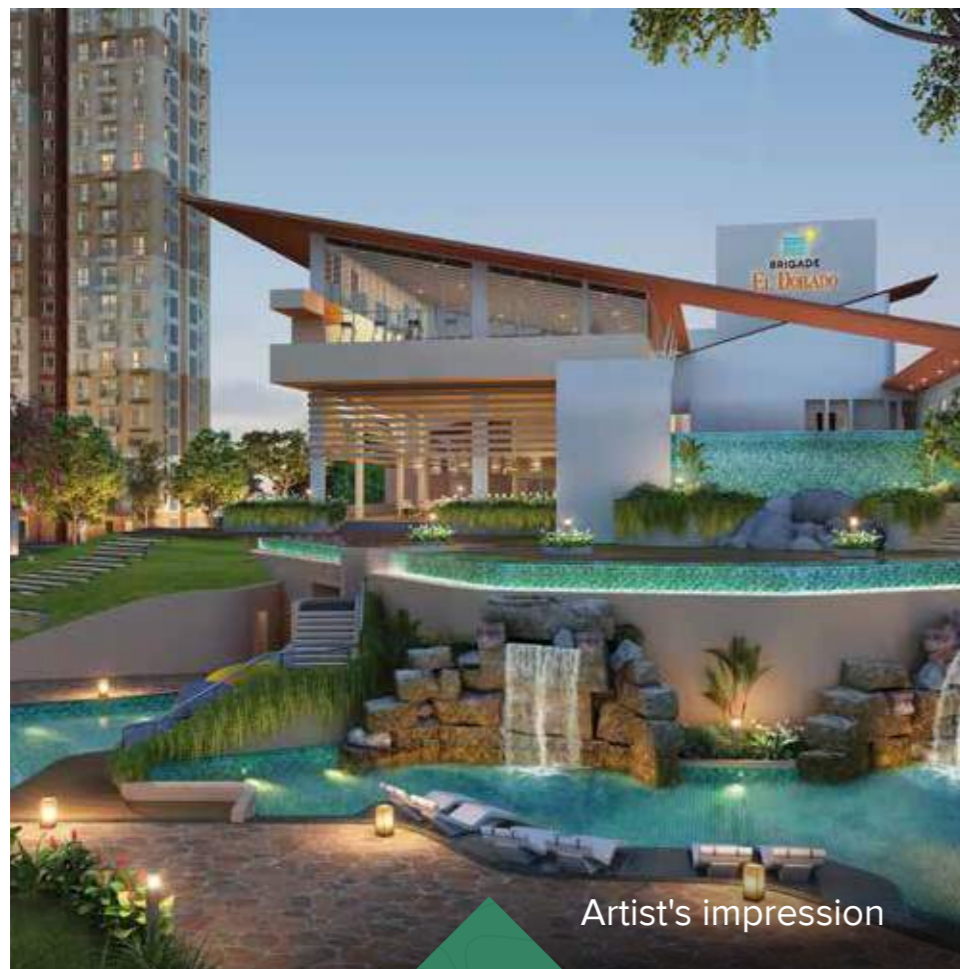
FOOTBALL FIELD

Watch your little one dodge, dribble and bend it like Beckham himself on our full-sized football ground.



SKATING RINK

Perfect your form and get your balance right, and you will be amazed how smooth life feels when you glide on two wheels.



Artist's impression

MINI-CRICKET FIELD

Designed for kids and adults of all ages, our mini cricket field would inspire you to practice your straight drives once again.



CLUBHOUSE

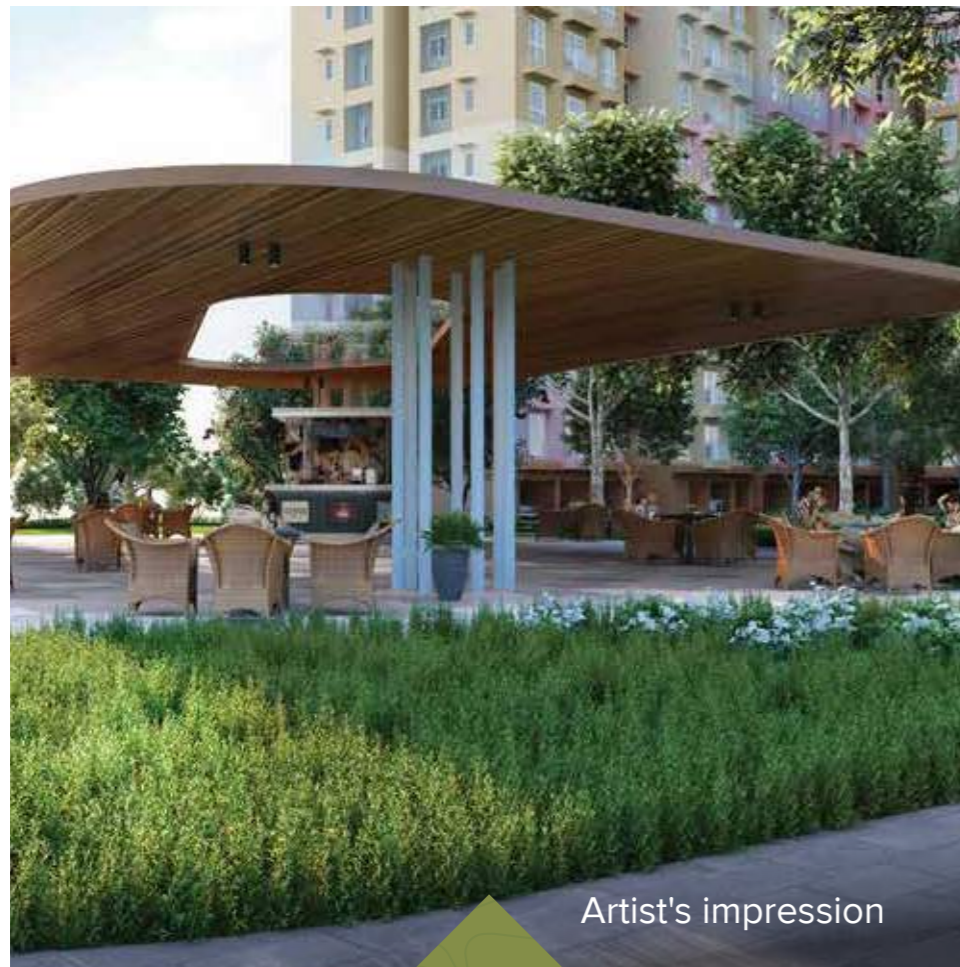
Give your health the importance it deserves. Choose between our two feature-packed club-houses, offering a bouquet of fitness and recreational amenities to help you get in the best shape of your life.



Artist's impression

MULTIPLE SWIMMING POOLS

Kids love it. Adults do too. With multiple swimming pools to choose from, water-sports will become your family's favorite new past-time.



Artist's impression

KIDS PLAY AREA

Designed for kids of all ages, our play area is packed with innovative outdoor games, where your little angel can play and frolic around all day.



Artist's impression

FARM CAFÉ

A great place to relax and enjoy healthful juices and dishes prepared using fresh organic produce.



Artist's impression

LANDSCAPING

A green, cool haven filled with a cornucopia of exotic flora and a calling card for migratory birds - the central greens is where nature takes everyone in its ever comforting embrace.



PROJECT UNIT PLANS



The spacious and airy 2 & 3 bedroom condominiums are the perfect choice for a growing family. Futuristically designed, the units at Tower Jasper are energy-efficient, well ventilated and offer mesmerizing views of landscaped greens. Giving you access to superior lifestyle amenities amidst acres of refreshing greenery, we have crafted a glittering golden abode, where your family can have it all.



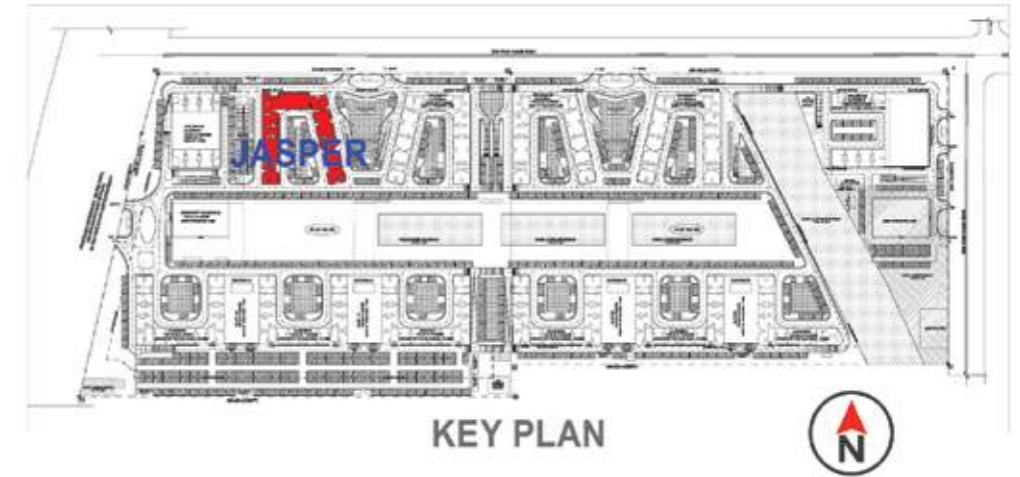
2 BHK

740 SFT
938 SFT

3 BHK

971 SFT
1401 SFT
1561 SFT

UNIT DISTRIBUTION PLAN (TOWER-J)

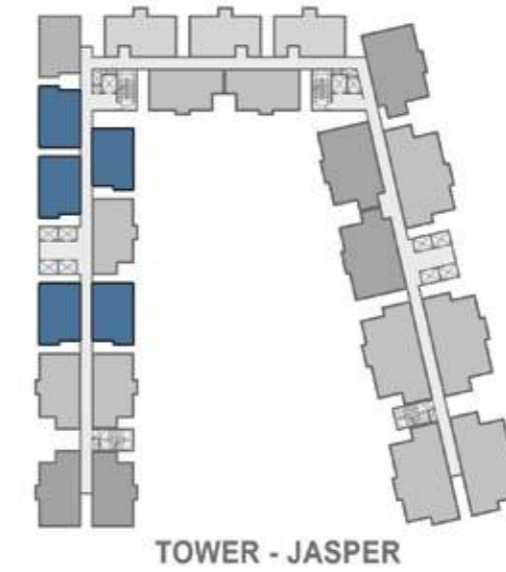
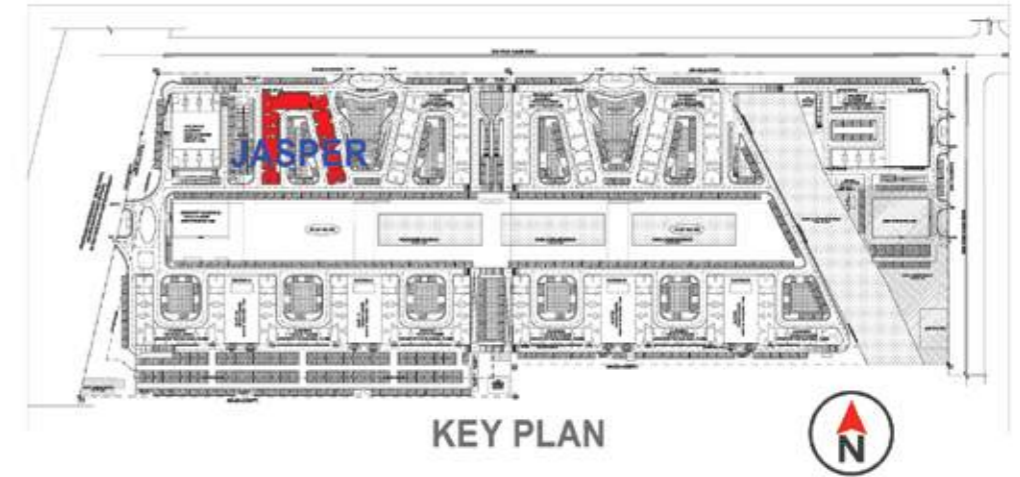
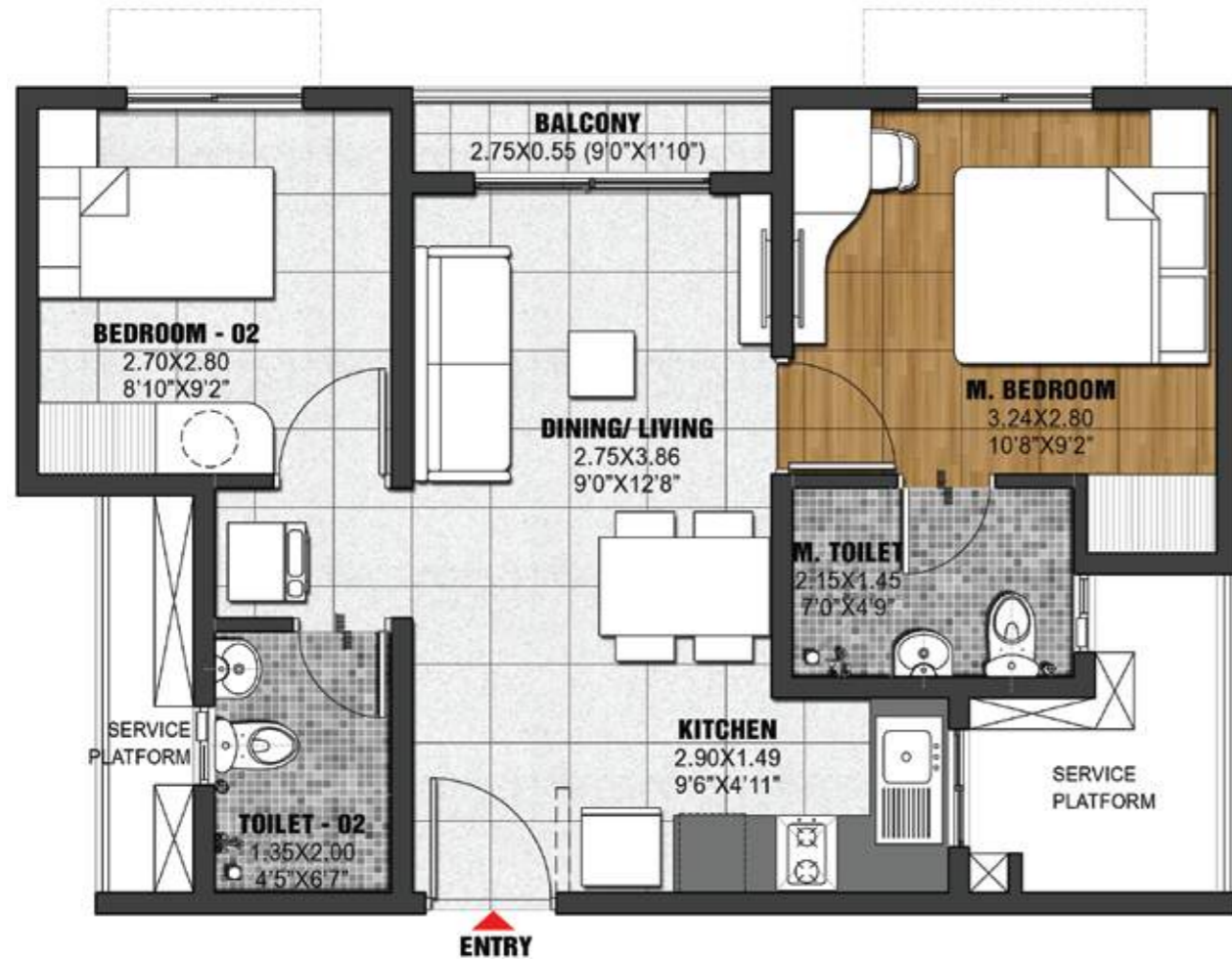


LEGEND

- TYPE - A3 3 BHK UNIT
- TYPE - A3a 3 BHK UNIT
- TYPE - A4 3 BHK UNIT
- TYPE - A4a 2 BHK UNIT
- TYPE - B 2 BHK UNIT
- TYPE - Ba 2 BHK UNIT
- TYPE - B2 2 BHK UNIT
- TYPE - C 3 BHK UNIT
- TYPE - Ca 3 BHK UNIT

The information depicted herein viz., master plans, floor plans, furniture layout, fittings, illustrations, specifications, designs, dimensions, rendered views, colours, amenities and facilities etc., are subject to change without notifications as may be required by the relevant authorities or the developer's architect, and cannot form part of an offer or contract. Whilst every care is taken in providing this information, the Developer cannot be held liable for variations. All illustrations and pictures are artist's impression only. The information are subject to variations, additions, deletions, substitutions and modifications as may be recommended by the company's architect and/or the relevant approving authorities. The Developer is wholly exempt from any liability on account of any claim in this regard. (1 square metre = 10.764 square feet). E & OE.

2 BHK URBAN (TYPE-B)

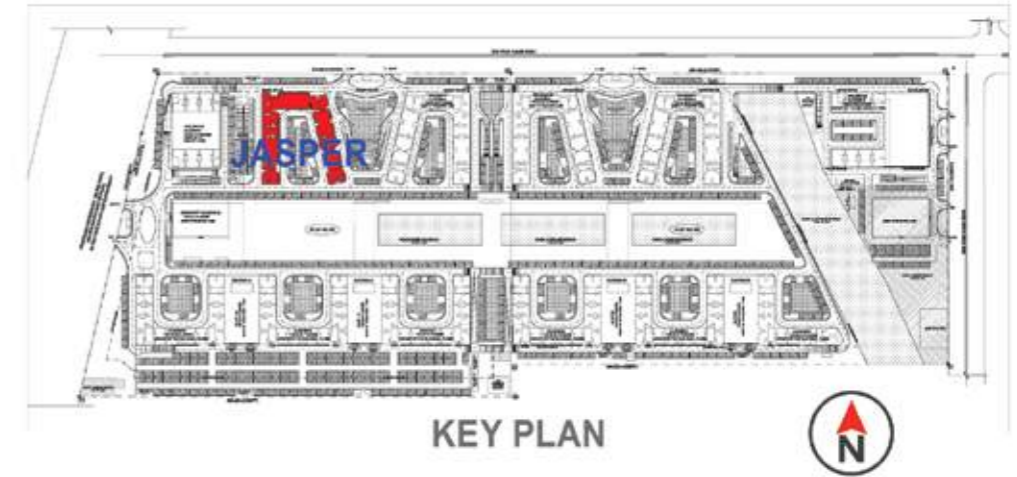


TYPE	UNIT DISTRIBUTION
TYPE - B	J-0105 – J-2405
	J-0106 – J-2406
	J-0108 – J-2408
	J-0109 – J-1909, J-2109 – J-2409
	J-0110 – J-2410

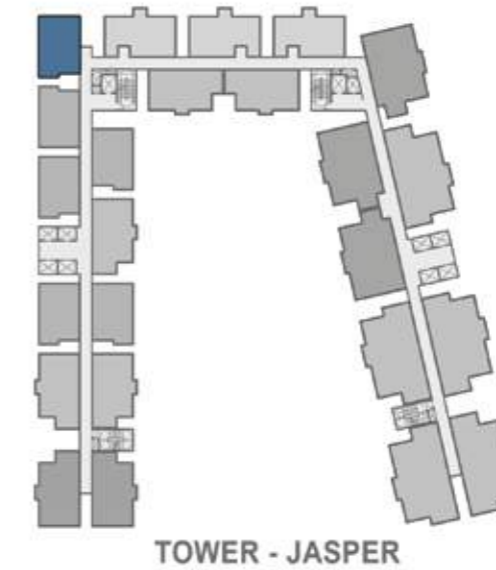
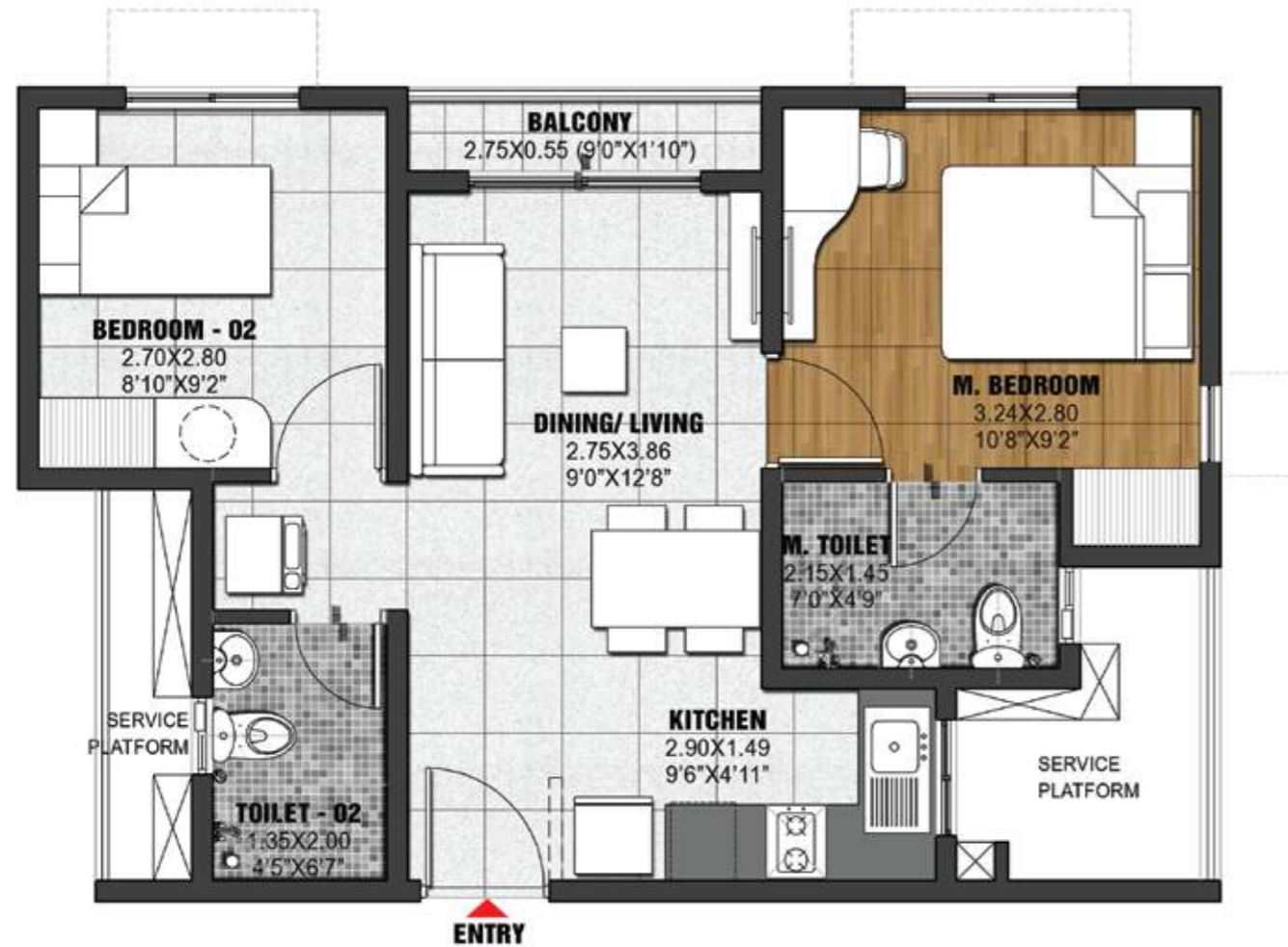
SUPER BUILT-UP AREA	CARPET AREA	BALCONY
740 Sq.ft / 68.74 Sq.m	466 Sq.ft / 43.32 Sq.m	16 Sq.ft / 1.51 Sq.m

The information depicted herein viz., master plans, floor plans, furniture layout, fittings, illustrations, specifications, designs, dimensions, rendered views, colours, amenities and facilities etc., are subject to change without notifications as may be required by the relevant authorities or the developer's architect, and cannot form part of an offer or contract. Whilst every care is taken in providing this information, the Developer cannot be held liable for variations. All illustrations and pictures are artist's impression only. The information are subject to variations, additions, deletions, substitutions and modifications as may be recommended by the company's architect and/or the relevant approving authorities. The Developer is wholly exempt from any liability on account of any claim in this regard. (1 square metre = 10.764 square feet). E & OE.

2 BHK URBAN (TYPE-Ba)



KEY PLAN



TOWER - JASPER

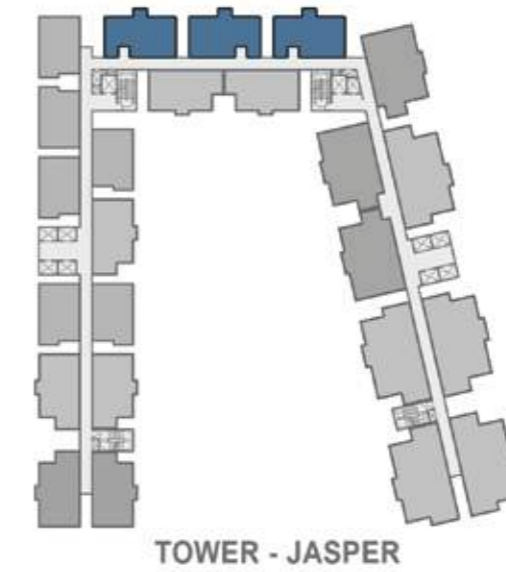
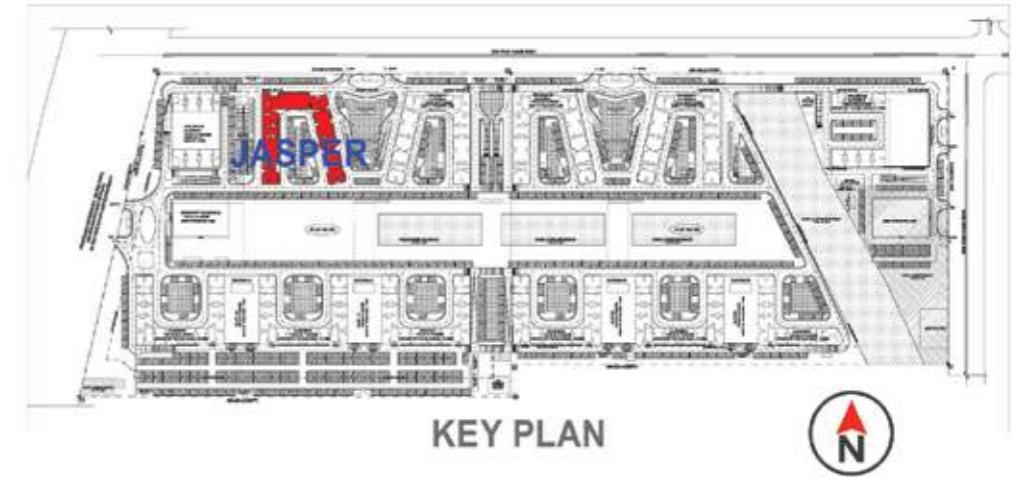
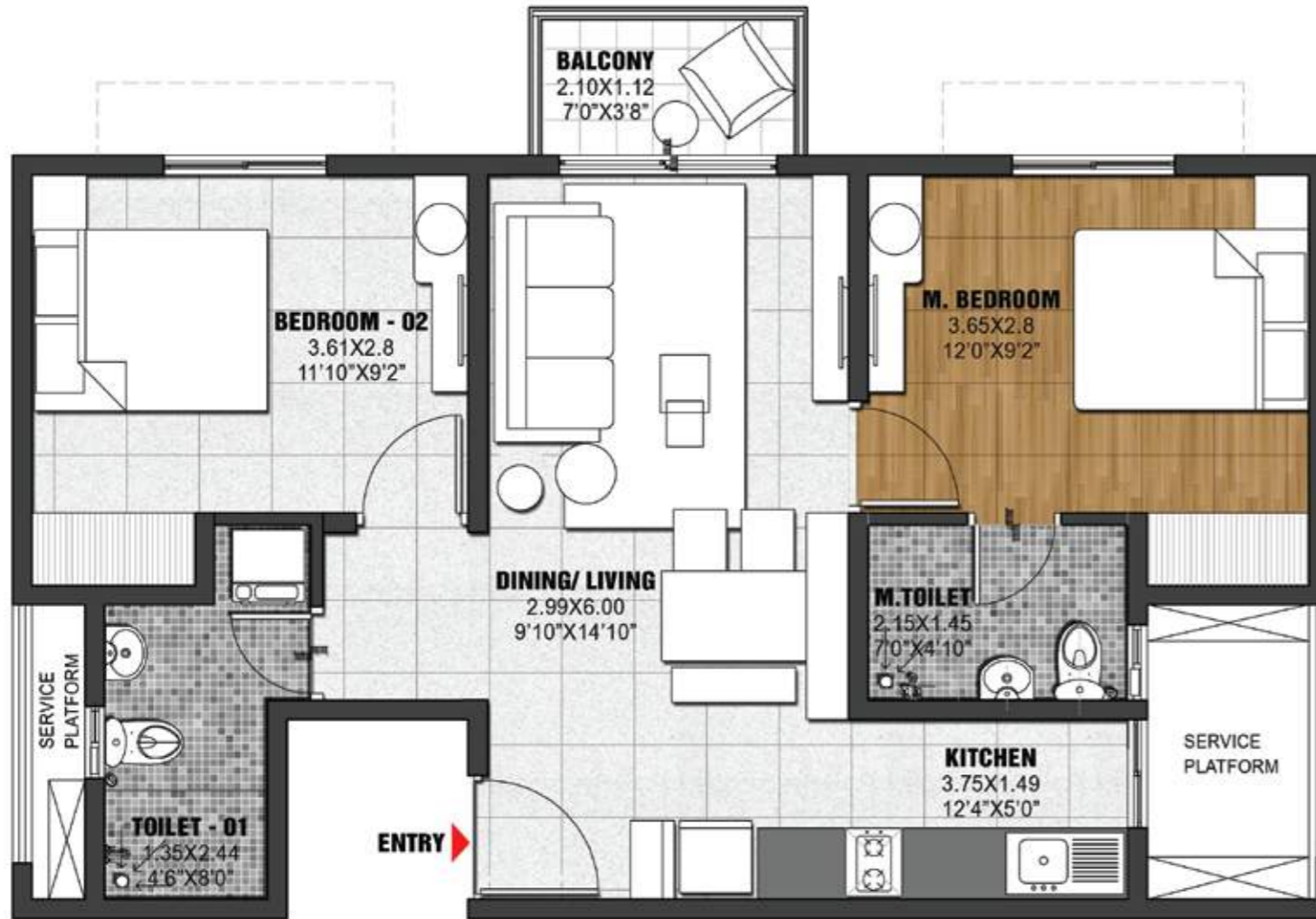
TYPE	UNIT DISTRIBUTION
TYPE - Ba	J-0111-2411

SUPER BUILT-UP AREA	CARPET AREA	BALCONY
740 Sq.ft / 68.74 Sq.m	466 Sq.ft / 43.32 Sq.m	16 Sq.ft / 1.51 Sq.m



The information depicted herein viz., master plans, floor plans, furniture layout, fittings, illustrations, specifications, designs, dimensions, rendered views, colours, amenities and facilities etc., are subject to change without notifications as may be required by the relevant authorities or the developer's architect, and cannot form part of an offer or contract. Whilst every care is taken in providing this information, the Developer cannot be held liable for variations. All illustrations and pictures are artist's impression only. The information are subject to variations, additions, deletions, substitutions and modifications as may be recommended by the company's architect and/or the relevant approving authorities. The Developer is wholly exempt from any liability on account of any claim in this regard. (1 square metre = 10.764 square feet). E & OE.

2 BHK GRAND (TYPE-B2)

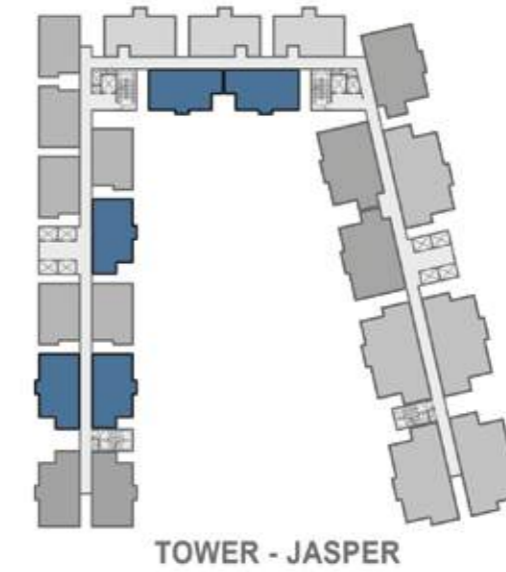
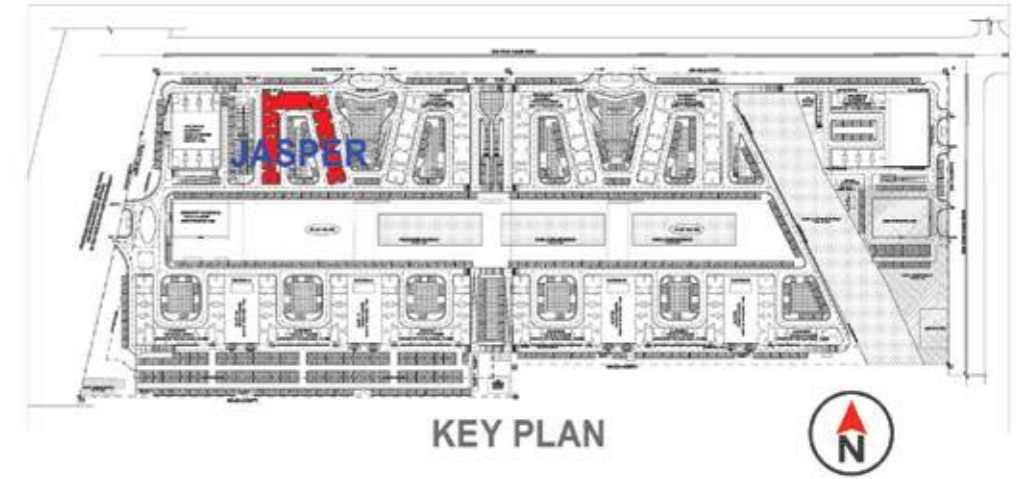
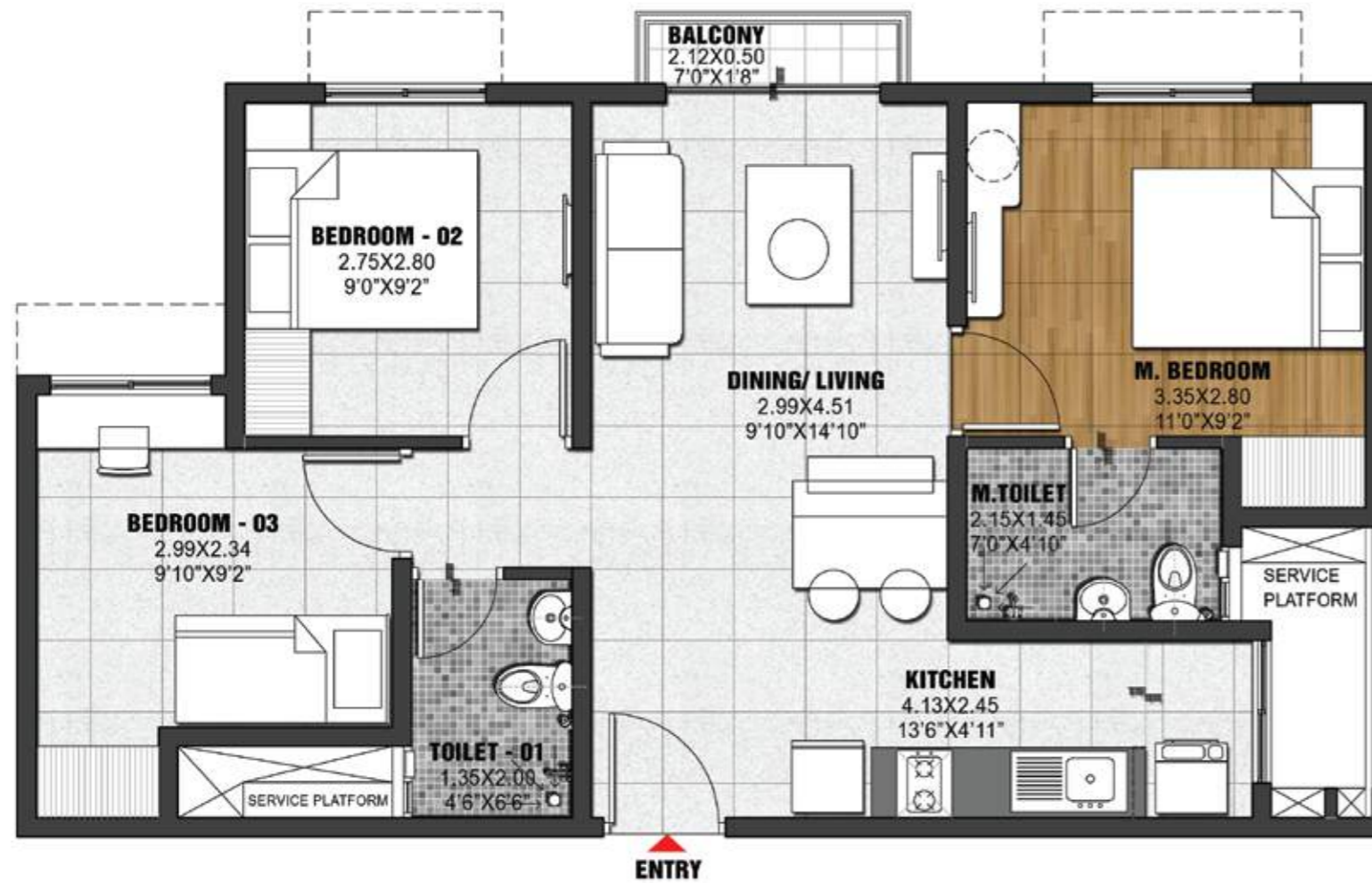


TYPE	UNIT DISTRIBUTION
TYPE - B2	J-0113 - J-2413
	J-0115 - J-2415
	J-0116 - J-2416

SUPER BUILT-UP AREA	CARPET AREA	BALCONY
938 Sq.ft / 87.13 Sq.m	592 Sq.ft / 54.96 Sq.m	25 Sq.ft / 2.35 Sq.m

The information depicted herein viz., master plans, floor plans, furniture layout, fittings, illustrations, specifications, designs, dimensions, rendered views, colours, amenities and facilities etc., are subject to change without notifications as may be required by the relevant authorities or the developer's architect, and cannot form part of an offer or contract. Whilst every care is taken in providing this information, the Developer cannot be held liable for variations. All illustrations and pictures are artist's impression only. The information are subject to variations, additions, deletions, substitutions and modifications as may be recommended by the company's architect and/or the relevant approving authorities. The Developer is wholly exempt from any liability on account of any claim in this regard. (1 square metre = 10.764 square feet). E & OE.

3 BHK URBAN (TYPE-A4)

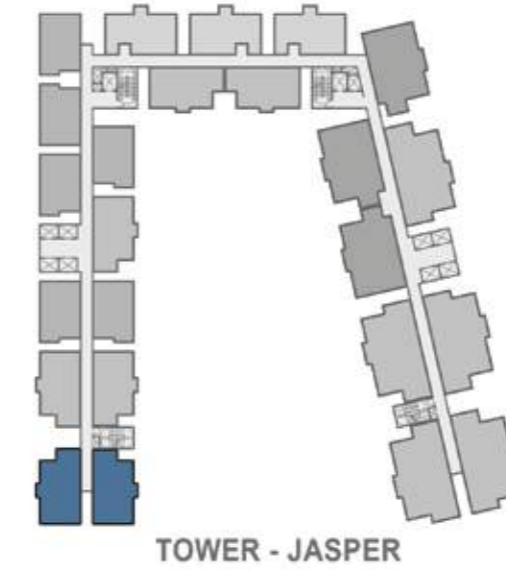
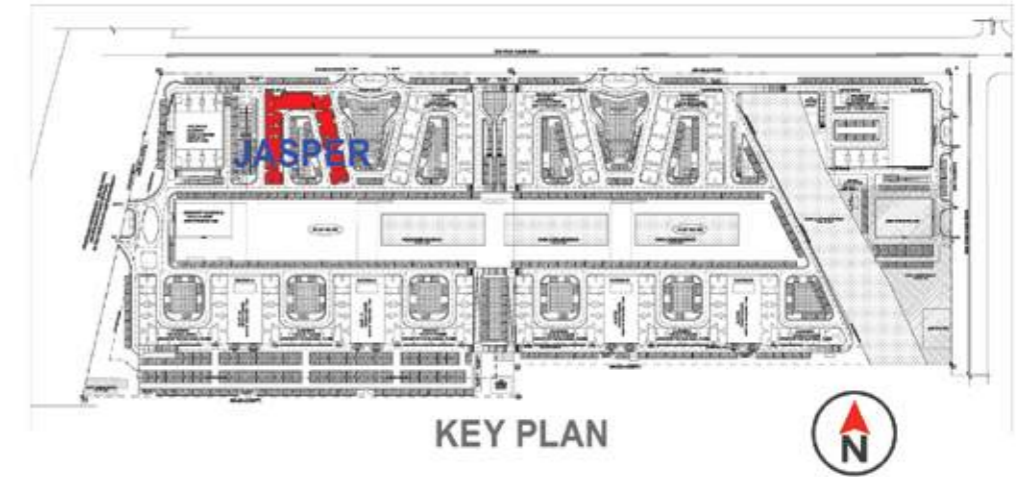
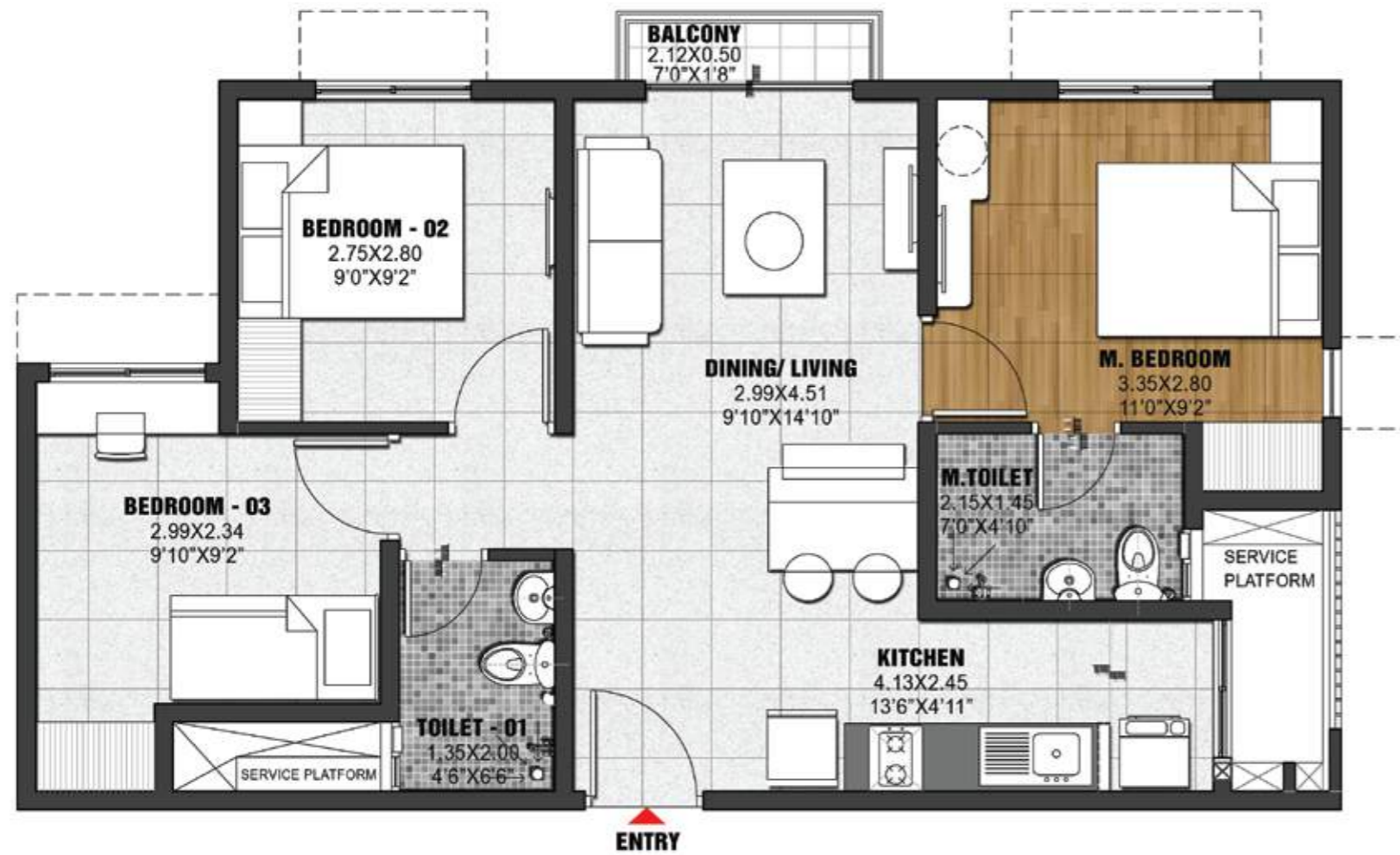


TYPE	UNIT DISTRIBUTION
TYPE - A4	J-0103 – J-2403
	J-0104 – J-2404
	J-0307 – J-2407
	J-0112 - J-2412
	J-0114 - J-2414

SUPER BUILT-UP AREA	CARPET AREA	BALCONY
971 Sq.ft / 90.21 Sq.m	628 Sq.ft / 58.31 Sq.m	11 Sq.ft / 1.05 Sq.m

The information depicted herein viz., master plans, floor plans, furniture layout, fittings, illustrations, specifications, designs, dimensions, rendered views, colours, amenities and facilities etc., are subject to change without notifications as may be required by the relevant authorities or the developer's architect, and cannot form part of an offer or contract. Whilst every care is taken in providing this information, the Developer cannot be held liable for variations. All illustrations and pictures are artist's impression only. The information are subject to variations, additions, deletions, substitutions and modifications as may be recommended by the company's architect and/or the relevant approving authorities. The Developer is wholly exempt from any liability on account of any claim in this regard. (1 square metre = 10.764 square feet). E & OE.

3 BHK URBAN (TYPE-A4a)

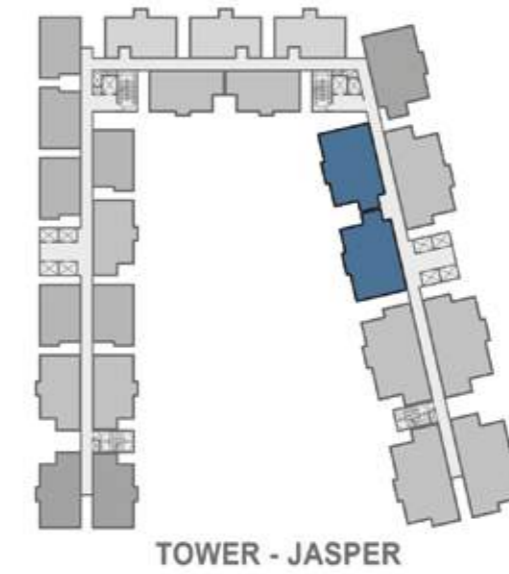
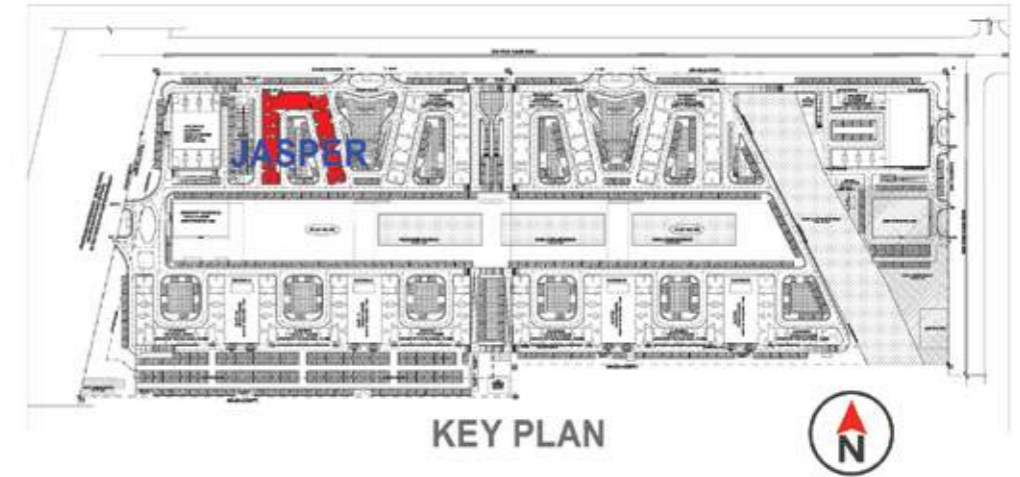
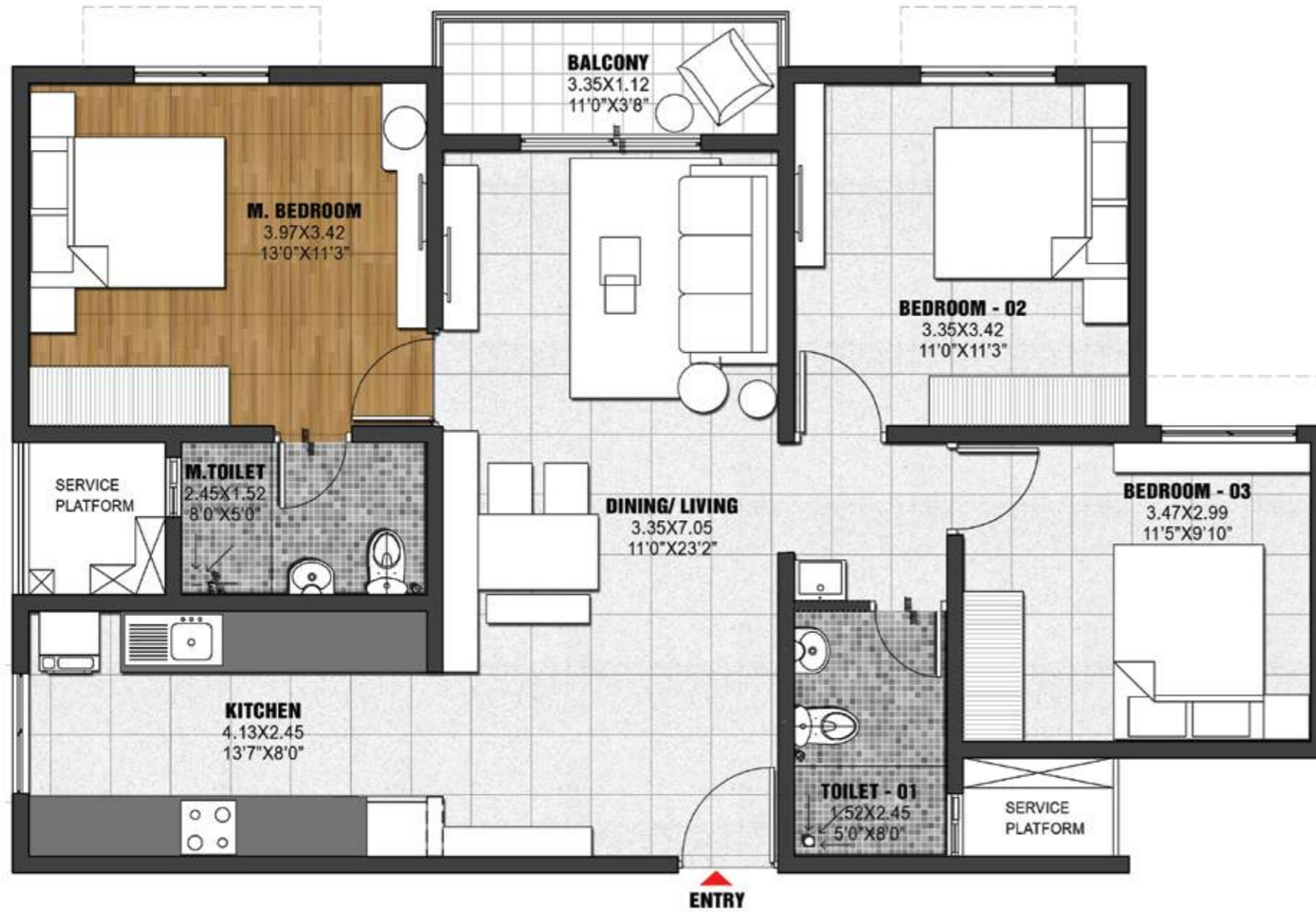


TYPE	UNIT DISTRIBUTION
TYPE - A4a	J-0101-2401
	J-0102-2402

SUPER BUILT-UP AREA	CARPET AREA	BALCONY
971 Sq.ft / 90.21 Sq.m	628 Sq.ft / 58.31 Sq.m	11 Sq.ft / 1.05 Sq.m

The information depicted herein viz., master plans, floor plans, furniture layout, fittings, illustrations, specifications, designs, dimensions, rendered views, colours, amenities and facilities etc., are subject to change without notifications as may be required by the relevant authorities or the developer's architect, and cannot form part of an offer or contract. Whilst every care is taken in providing this information, the Developer cannot be held liable for variations. All illustrations and pictures are artist's impression only. The information are subject to variations, additions, deletions, substitutions and modifications as may be recommended by the company's architect and/or the relevant approving authorities. The Developer is wholly exempt from any liability on account of any claim in this regard. (1 square metre = 10.764 square feet). E & OE.

3 BHK COMFORT (TYPE-A3)

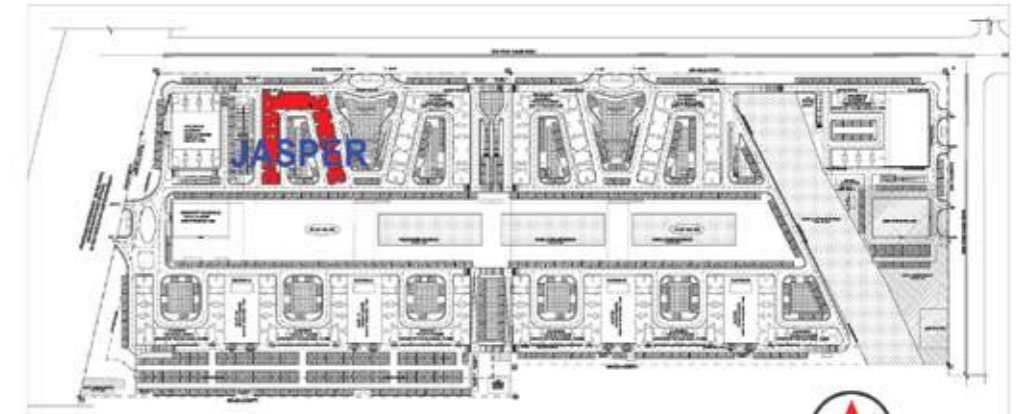
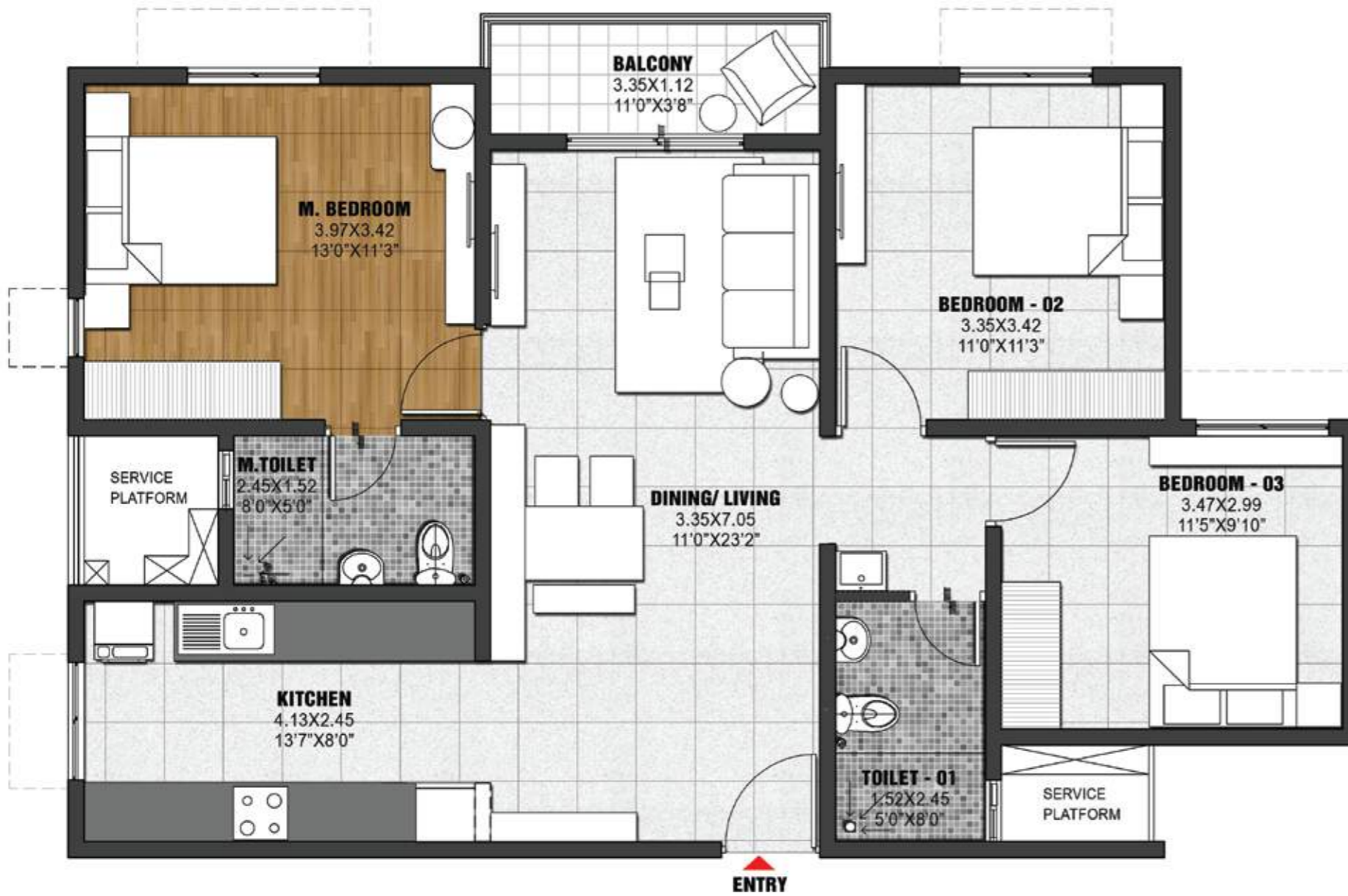


TYPE	UNIT DISTRIBUTION
TYPE - A3	J-0118-1918
	J-2118-2418
	J-0320-2420

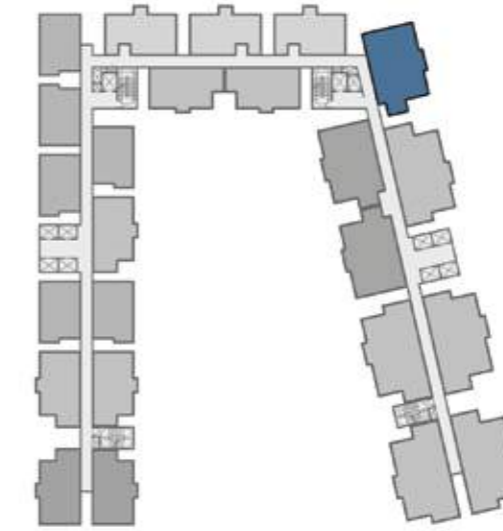
SUPER BUILT-UP AREA	CARPET AREA	BALCONY
1401 Sq.ft / 130.19 Sq.m	893 Sq.ft / 82.93 Sq.m	40 Sq.ft / 3.75 Sq.m

The information depicted herein viz., master plans, floor plans, furniture layout, fittings, illustrations, specifications, designs, dimensions, rendered views, colours, amenities and facilities etc., are subject to change without notifications as may be required by the relevant authorities or the developer's architect, and cannot form part of an offer or contract. Whilst every care is taken in providing this information, the Developer cannot be held liable for variations. All illustrations and pictures are artist's impression only. The information are subject to variations, additions, deletions, substitutions and modifications as may be recommended by the company's architect and/or the relevant approving authorities. The Developer is wholly exempt from any liability on account of any claim in this regard. (1 square metre = 10.764 square feet). E & OE.

3 BHK COMFORT (TYPE-A3a)



KEY PLAN



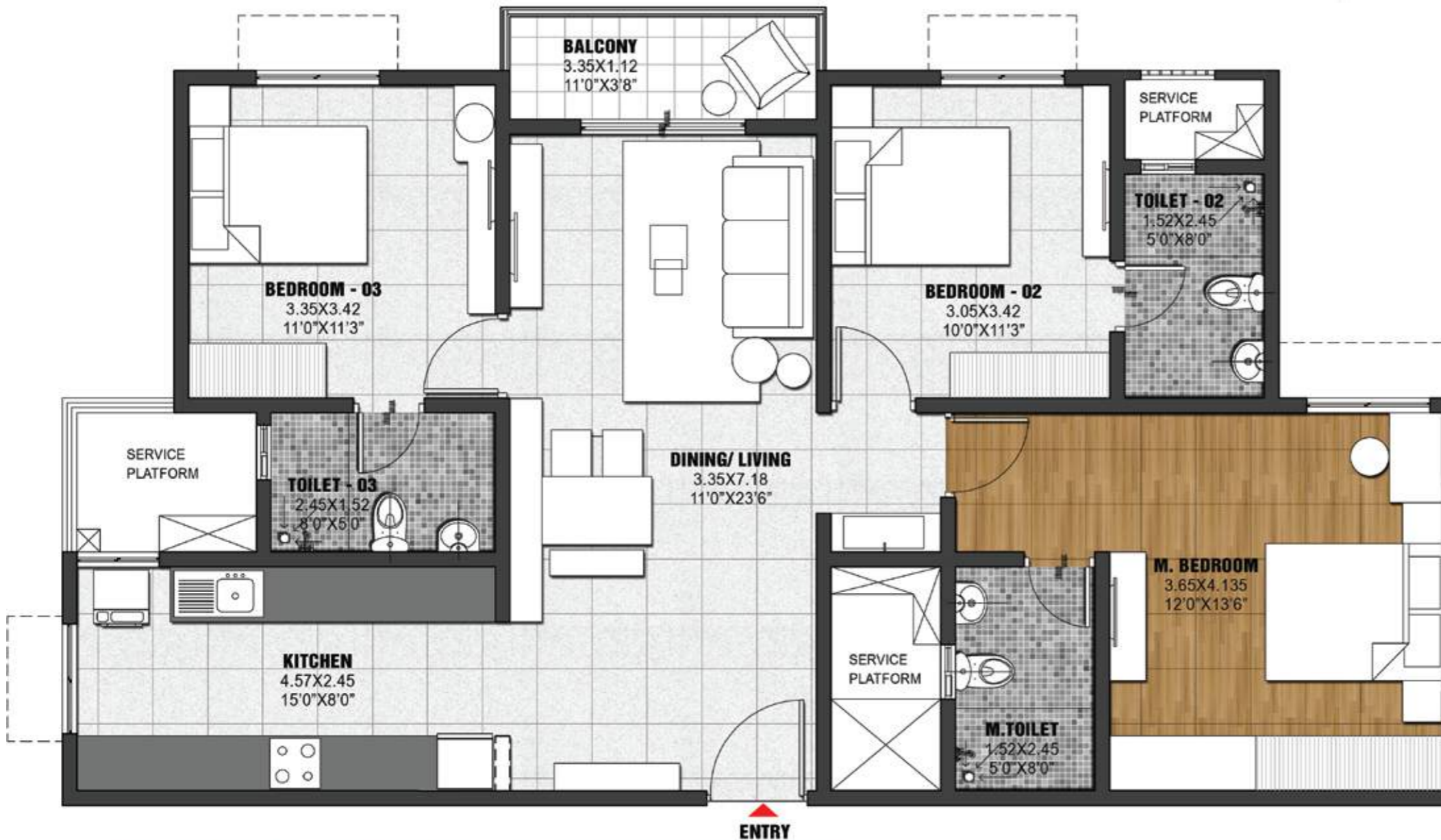
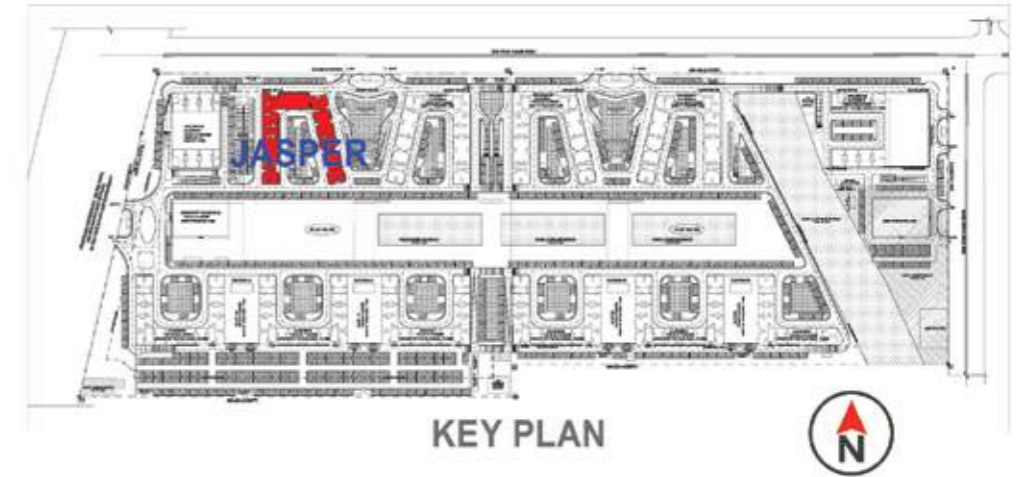
TOWER - JASPER

TYPE	UNIT DISTRIBUTION
TYPE - A3a	J-0117-2417

SUPER BUILT-UP AREA	CARPET AREA	BALCONY
1401 Sq.ft / 130.19 Sq.m	893 Sq.ft / 82.93 Sq.m	40 Sq.ft / 3.75 Sq.m

The information depicted herein viz., master plans, floor plans, furniture layout, fittings, illustrations, specifications, designs, dimensions, rendered views, colours, amenities and facilities etc., are subject to change without notifications as may be required by the relevant authorities or the developer's architect, and cannot form part of an offer or contract. Whilst every care is taken in providing this information, the Developer cannot be held liable for variations. All illustrations and pictures are artist's impression only. The information are subject to variations, additions, deletions, substitutions and modifications as may be recommended by the company's architect and/or the relevant approving authorities. The Developer is wholly exempt from any liability on account of any claim in this regard. (1 square metre = 10.764 square feet). E & OE.

3 BHK GRAND (TYPE-C)

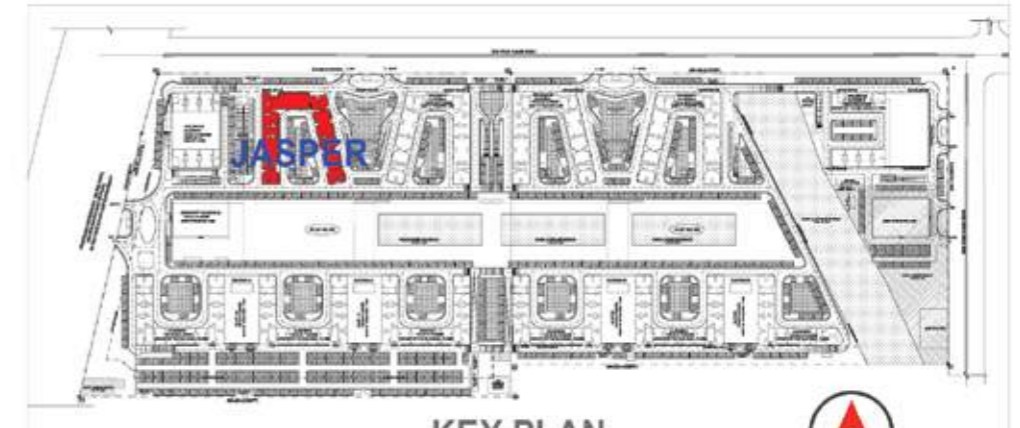


TYPE	UNIT DISTRIBUTION
TYPE - C	J-0119-2419
	J-0122-2422
	J-0121-2421

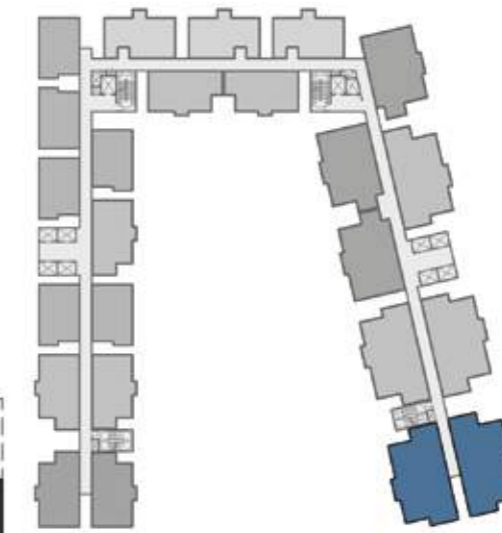
SUPER BUILT-UP AREA	CARPET AREA	BALCONY
1561 Sq.ft / 145.06 Sq.m	996 Sq.ft / 92.58 Sq.m	40 Sq.ft / 3.75 Sq.m

The information depicted herein viz., master plans, floor plans, furniture layout, fittings, illustrations, specifications, designs, dimensions, rendered views, colours, amenities and facilities etc., are subject to change without notifications as may be required by the relevant authorities or the developer's architect, and cannot form part of an offer or contract. Whilst every care is taken in providing this information, the Developer cannot be held liable for variations. All illustrations and pictures are artist's impression only. The information are subject to variations, additions, deletions, substitutions and modifications as may be recommended by the company's architect and/or the relevant approving authorities. The Developer is wholly exempt from any liability on account of any claim in this regard. (1 square metre = 10.764 square feet). E & OE.

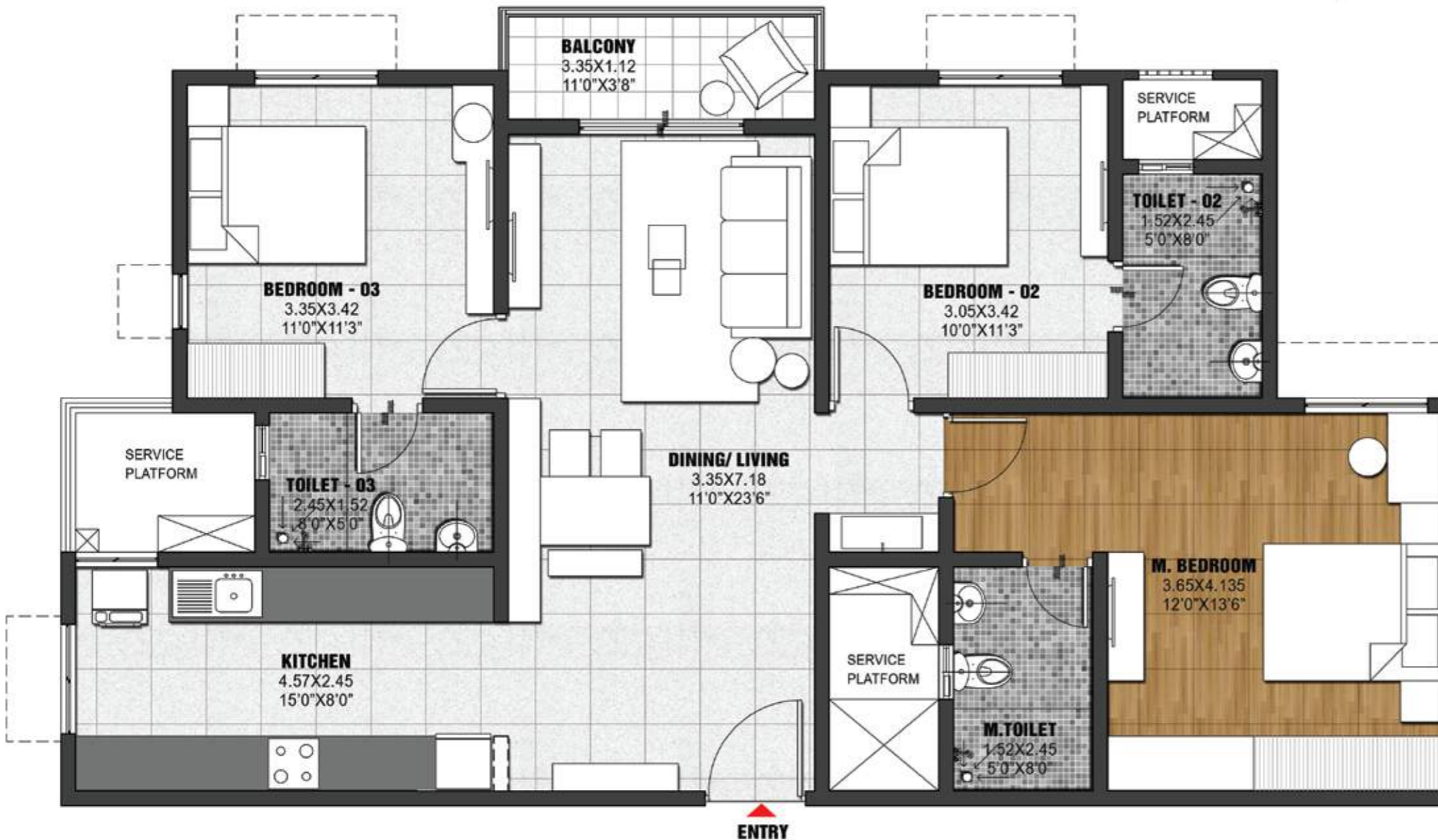
3 BHK GRAND (TYPE-Ca)



KEY PLAN



TOWER - JASPER



TYPE	UNIT DISTRIBUTION
TYPE - Ca	J-0123-2423
	J-0124-2424

SUPER BUILT-UP AREA	CARPET AREA	BALCONY
1561 Sq.ft / 145.06 Sq.m	996 Sq.ft / 92.58 Sq.m	40 Sq.ft / 3.75 Sq.m

The information depicted herein viz., master plans, floor plans, furniture layout, fittings, illustrations, specifications, designs, dimensions, rendered views, colours, amenities and facilities etc., are subject to change without notifications as may be required by the relevant authorities or the developer's architect, and cannot form part of an offer or contract. Whilst every care is taken in providing this information, the Developer cannot be held liable for variations. All illustrations and pictures are artist's impression only. The information are subject to variations, additions, deletions, substitutions and modifications as may be recommended by the company's architect and/or the relevant approving authorities. The Developer is wholly exempt from any liability on account of any claim in this regard. (1 square metre = 10.764 square feet). E & OE.

SPECIFICATIONS

STRUCTURE

RCC Framed structure using Aluminium Form Work

COMMON AREA - FLOORING

Waiting lounge, reception, GF lobby & lift lobby: Marble, Granite & Vitrified Tiles

Staircases: Concrete step tiles, Vitrified tiles & Epoxy coating for stairs (from 1st floor)

Other lift lobby and corridors (upper): Vitrified tiles (Matt Finish)

APARTMENT UNITS - FLOORING

Living, Dining, Family & Foyer: Vitrified tiles

Master Bedroom, Other Bedrooms & Kitchenette: Vitrified tiles

Balcony / deck: Matt finish tiles

Master Bedroom Toilet & Common Toilet: Anti-skid ceramic tiles

WALL DADO

Master Bedroom Toilet & Common Toilet: Ceramic tile cladding up to false ceiling height

KITCHEN

Counter: Provision for modular kitchen

Plumbing & Electrical: Plumbing point provision for water purifier, washing machine. Electrical points provision for water purifier, refrigerator, hob, chimney, mixer/grinder, Microwave Oven & Washing Machine

WINDOWS

UPVC / Anodised Aluminium with mosquito mesh provision

DOORS

Main entry door - to unit: Flush shutter with both side Laminate and architrave

Bedroom doors: Engineered & Treated Hard wood frame & particle board with hdf skin and architrave

Toilet door: Engineered & Treated Hard wood frame, Shutter laminated both sides and architrave

Balcony door: UPVC / Aluminium with bug screen 2 track with one side fixed panel

Shaft door: MS door frame with mild sheet shutter

TOILETS

CP Fittings: Jaquar / Ess Ess / Essco or equivalent

Sanitary fixtures: Floor mounted white EWC (Hindware/Parryware/ Cera or equivalent) with exposed flush tank of standard make including health faucet

Accessories: Towel rod

False Ceiling: Grid ceiling Calcium silicate or equivalent

PAINTING & FINISHES

Accessories: Combination of External texture paint with external grade emulsion

Internal ceilings & common area: Oil Bound Distemper or Emulsion

Unit ceiling: Acrylic emulsion paint

Internal walls, common area & lift Lobby: Emulsion paint

Staircase, utility area and service area: Oil bound distemper

Basement: Cement paint

Unit walls: Acrylic emulsion paint

Steel works: Synthetic enamel paint

Woodwork: Enamel paint

ELECTRICAL

3 Bedroom Apartment: 5 KW

2 Bedroom Apartment: 4 KW

Modular switches: Anchor or equivalent make

DG BACKUP

3 Bedroom Apartment: 2 KW

2 Bedroom Apartment: 1.5 KW

VERTICAL TRANSPORTATION

Lifts: OTIS / Kone or Equivalent

SECURITY SYSTEM & AUTOMATIONS

Provision for Intercom Facility & CCTV as per design

SUSTAINABILITY

Organic waste converter, Ground water recharging Rain water storage, Street light, STP & Solar water heater (provided only for top 2 floors)

AWARDS FOR 2019-20



Brigade Group received the Best Developer of the Year Award at the **Times Business Awards 2019**

Nalapad Brigade Centre awarded the 'Best Commercial Project- South Zone' at the **CNBC AWAAZ Awards 2019**

Brigade Hospitality Services Ltd this year has for the first time been certified by **Great Place to Work Institute** and ranked 15th amongst India's Great Mid-size Workplaces.

Mr. M R Jaishankar received the Lifetime Achievement Award at the **11th Realty Plus Awards 2019 - South**

Brigade Panorama won the award for Excellence in Delivery at the **11th Realty Plus Awards 2019 – South**

Brigade International Financial Centre, Gujarat-our flagship project in GIFT City, Ahmedabad received the 'Commercial Project of the Year Award' at the **Realty Plus Awards 2019**

Brigade Opus won the Best Commercial Complex Award at the **CARE Awards 2019**

Orion Mall received the 'Most Admired Shopping Centre of the Year' Award at the **Times Business Awards 2019**

Brigade was recognised as the Best Place to work in the real estate category for the 9th year in a row by **Great Place to Work Institute**

Brigade Group received One of India Top Challengers Award at the **CWAB Awards 2019**

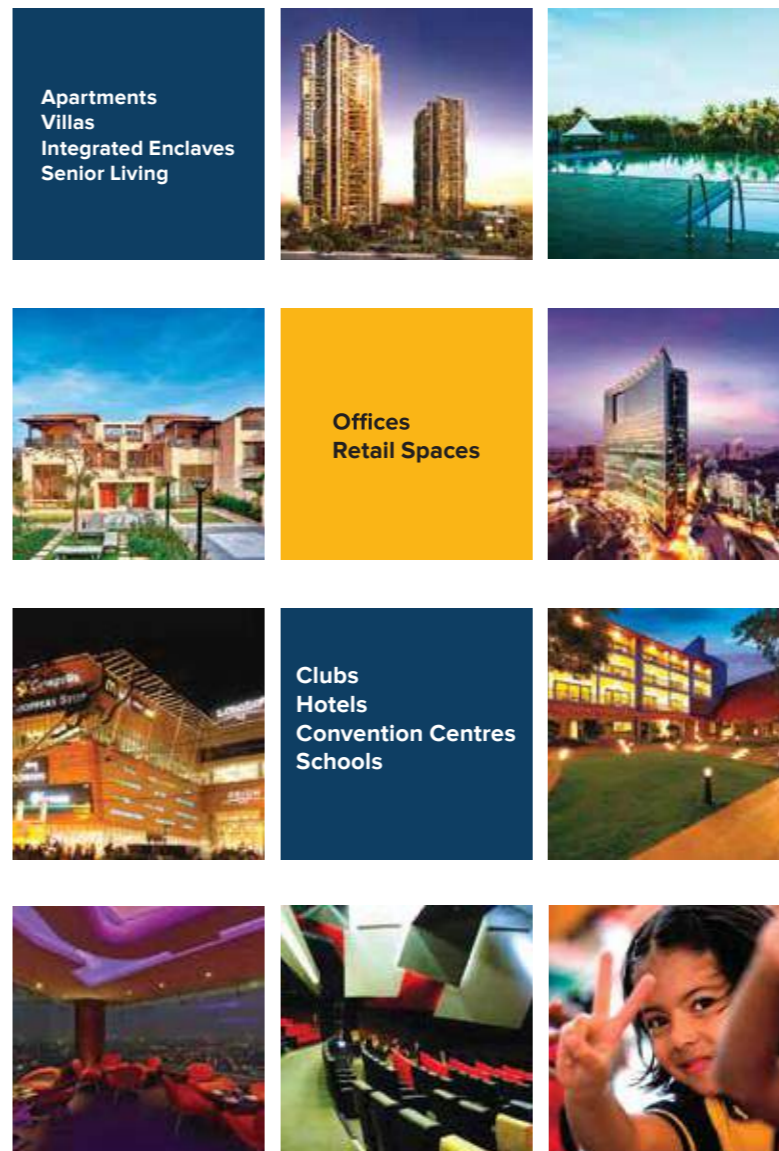
Brigade Cornerstone Utopia won the Integrated Township Project of the Year Award at the **11th Realty Plus Awards 2019 - South**

Brigade Group was ranked one among **India's 75 Best Places to Work for Women**

Brigade Mountain View won the award for Best Residential Dwellings above 50 units in Mysuru at the **CARE Awards 2019**

Brigade Group was awarded the Best Developer of the Year, South India at the Commonfloor and Indiaproperty **Realty Awards 2020**

MULTIPLE DOMAINS. SINGLE-MINDED COMMITMENT.



Brigade is one of India's leading developers with over three decades of experience in building positive experiences for all its stakeholders. We have transformed the city skylines of Bangalore, Mysore, Mangalore, Hyderabad, Chennai, Kochi and Ahmedabad with our developments across Residential, Offices, Retail, Hospitality and Education sectors.

Brigade's residential portfolio includes villas, villaments, penthouses, premium residences, luxury apartments, value homes, urban studios, independent living for seniors and mixed-use lifestyle enclaves and townships. Brigade is among the few developers who also enjoys a reputation of developing Grade A commercial properties. We are the license owners of the World Trade Center across South India, Our commercial spaces have top international clients operating out of them. Brigade's retail projects include Orion Mall, Orion Avenues and Orion Uptown. Brigade's hospitality offerings include star hotels, recreational clubs and convention centres, Celebrations Catering & Events and The Baking Company. Since its inception in 1986, Brigade has completed over 250 buildings amounting to 66 million sq. ft of developed space in residential, offices, retail and hospitality sectors across 7 cities.

We have been consistently ranked among the 100 Best Places to Work in India by Great Place to Work Institute for 9 years in a row. The Group has also been socially responsible and has vastly contributed to society. This responsible attitude and innovative mind-set combined with uncompromising quality of the projects over the years has created a reputed brand that builds positive experiences.

For more information, please visit www.brigadegroup.com



BRIGADE

Building Positive Experiences

UPGRADE TO BRIGADE, reach us on 1800 102 9977 • email: salesenquiry@brigadegroup.com

Marketing Office:

Experience Centre,
WTC Bangalore @ Brigade Gateway Campus,
Dr. Rajkumar Road, Malleswaram-Rajajinagar,
Bengaluru 560 055

Registered & Corporate Office:

29th & 30th Floor,
WTC Bangalore@Brigade Gateway Campus,
Dr. Rajkumar Road, Malleswaram-Rajajinagar,
Bengaluru 560 055
Ph: +91-80-41379200 • Fax: +91-80-22210784

Dubai:

Brigade Enterprises Ltd.,
708, Atrium Centre, Bank Street, Bur Dubai
Ph: +971 4 355 5504 | Fax: +971 4 355 5541
dubaisales@brigadegroup.com

Offices also at: CHENNAI • HYDERABAD • MYSURU

